



For more information

487 North Main Street
 Amherst, WI 54406
 Phone: (715) 824-5202
 Fax: (715) 824-5959
 jensencenter@triver.com
 Office Hours: Mon. and Wed. 8 - 3:30, Tuesday and
 Thursday 8 - 4:30, Friday 8 - 12 noon
 Call for an appointment if you would like to review the
 Community Center after hours.

Amenities include

Theater

We offer comfortable Theater seating for up to 242
 guest, plus 8 wheel chair locations, state-of-the-art stage
 lighting, curtains, audio connections, computer/video
 projector and 20' screen, a perfect setting for business
 seminars. Lighting and sound technicians are available.

Conference Room

Our large conference room seats 25 - 30 people with
 plenty of space for presentations.

Lobby

Our lobby is the hub for all of the rental areas. Display
 cases on the south wall are used for various art and
 craft exhibits throughout the year.

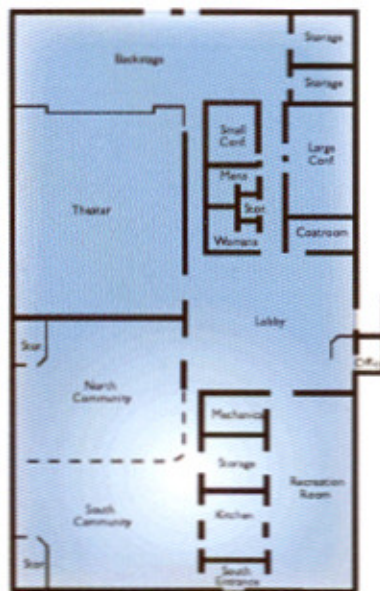
Kitchen

Our heat-and-serve kitchen includes a commercial
 stove, two ovens, refrigeration, and plenty of counter
 space for caterers.

Community Rooms

North and South this area of the center is ideal for
 groups of 50 - 250 people. Designed with a room
 divider.

Area Catering Services are Available



Location

Amherst is located 15 miles southeast of Stevens
 Point (highway 10), 9 miles east of Plover (highway
 B) and 12 miles northwest of Waupaca

CONVENTION CENTRAL
 STEVENS POINT/PLOVER

MEETING/
 BANQUET
 FACILITY



Stevens
 Point
 AREA

CONVENTION
 & VISITORS
 BUREAU

340 DIVISION STREET NORTH
 STEVENS POINT, WI 54481
 715-344-2556
 FAX 715-344-5818